

MENTAL HEALTH COMPANION CHATBOT

¹R. Anusuya, ²Divyansh Mittal, ³Gajal Sharma, ⁴Bharti, ⁵Dimpal

¹Professor, Department of CSE, Modern Institute of Technology and Research Centre, Rajasthan, India.

^{2,3,4,5}UG Student, Department of CSE, Modern Institute of Technology and Research Centre, Rajasthan, India

Received : 27 March 2026

Revised : 28 March 2026

Accepted : 29 March 2026

Published : 31 March 2026

Corresponding Author:

Divyansh Mittal

Abstract— Mental health support has become essential today due to increasing stress, anxiety, and limited access to professional help. The Mental Health Companion simplifies this by providing real-time emotional support and guidance based on user input such as text or voice. It uses Natural Language Processing (NLP) to detect emotions and deliver personalized responses, mood insights, and stress-relief suggestions. Instead of relying entirely on complex models, the system follows a structured and modular approach to ensure reliable, fast, and understandable interactions. The platform also maintains user privacy and offers a safe space for open expression. Built using modern technologies, the Mental Health Companion focuses on accessibility, low cost, and continuous support, making mental health care more practical and user-friendly.

Keywords: *Artificial Intelligence; Emotion Detection; Mental Health; Mood Analysis; Natural Language Processing; Personalized Support; Chatbot; Well-being*

Copyright © 2026: R. Anusuya, Divyansh Mittal, Gajal Sharma, Bharti, Dimpal, This is an open access distribution, and reproduction in any medium, provided Access article distributed under the Creative Commons Attribution License the original work is properly cited License, which permits unrestricted use.

Citation: R. Anusuya, Divyansh Mittal, Gajal Sharma, Bharti, Dimpal, "MENTAL HEALTH COMPANION CHATBOT", Journal of Science, Computing and Engineering Research, 9(03), March 2026.

I INTRODUCTION

In today's fast-paced and digitally driven world, mental health has emerged as a critical aspect of overall well-being. Increasing levels of stress, anxiety, depression, and emotional imbalance have created a growing need for accessible and timely mental health support. However, traditional mental healthcare systems often face challenges such as social stigma, high costs, limited availability of professionals, and lack of immediate assistance. These limitations make it difficult for individuals to seek help when they need it the most.

The Mental Health Companion is an AI-enabled support system designed to provide continuous emotional assistance and guidance through a user-friendly digital platform. It acts as an intelligent companion that interacts with users in real time, helping them express their thoughts and emotions without fear of judgment. The system integrates Artificial Intelligence (AI) and Natural Language Processing (NLP) to understand user inputs and identify emotional states effectively.

The application allows users to communicate through text or voice, enabling flexible and convenient interaction. Based on the analysis of user input, the system detects mood patterns, identifies emotional conditions and provide suggestions.

The system follows a structured and modular design approach, ensuring reliability, quick response, and easy interpretation of results. Additionally, the platform emphasizes user privacy and confidentiality, creating a safe and secure environment for open communication. It also supports features such as mood tracking and continuous engagement, which help users monitor their emotional well-being over time.

The overall objective of the Mental Health Companion is to make mental health support more accessible, affordable, and effective by leveraging modern technology, thereby promoting emotional awareness and improving quality of life.

II PROBLEM STATEMENT

Mental health issues such as stress, anxiety, and depression are increasing rapidly in today's fast-paced and competitive world. Academic pressure, work demands, and personal challenges have made it difficult for individuals to maintain emotional stability and overall well-being. In many cases, individuals fail to recognize the early signs of mental health problems. Lack of awareness and understanding leads to neglect, which can worsen the condition over time and negatively impact both personal and professional life. Another major issue is the social stigma associated with mental health.

People often hesitate to express their feelings or seek help due to fear of being judged or misunderstood by others. This prevents timely intervention and support.

Access to professional mental health services is also limited. High consultation costs, shortage of qualified professionals, and long waiting times make it difficult for individuals to receive immediate help when they need it the most. In rural and underdeveloped areas, the availability of mental health resources is even more restricted. This creates a significant gap between the demand for mental health support and the accessibility of proper care.

Existing digital platforms attempt to address these issues but often lack real-time interaction and personalization. Many applications provide generic responses that fail to meet the specific emotional needs of users. Additionally, some systems rely on complex technologies that are not transparent or easy to understand. This reduces user trust and makes the system less effective for continuous use and engagement. There is also a lack of platforms that ensure complete privacy and confidentiality. Users need a safe and secure environment where they can openly share their thoughts without fear of data misuse or exposure. Furthermore, continuous monitoring and engagement features such as mood tracking are often missing in existing solutions. Without these features, users cannot effectively track their emotional progress over time.

Therefore, there is a strong need to develop a Mental Health Companion that provides real-time emotional support, personalized guidance, and a secure environment. The system should be accessible, affordable, and user-friendly, helping individuals manage their mental well-being and improve their overall quality of life.

III RELATED WORK

Mental health support systems have gained significant attention in recent years due to the increasing prevalence of stress, anxiety, and emotional disorders. Traditional approaches to mental healthcare mainly involve face-to-face counseling, therapy sessions, and clinical treatments. While these methods are effective, they often lack accessibility, immediacy, and affordability, especially for individuals who require continuous support.

With the growth of digital technology, various online platforms and mobile applications have been developed to provide mental health assistance. These systems commonly use chatbots and self-help modules to guide users; however, many of them offer generic responses and lack the ability to understand individual emotional contexts effectively. This reduces their overall impact and user engagement. The advancement of Artificial Intelligence (AI) and Natural Language Processing (NLP) has enabled the development of intelligent mental health systems that can analyze user input and detect emotional states. These AI-based systems can provide more personalized responses, but they often rely on complex models that may lack transparency and interpretability. Additionally, such systems may require high computational resources and continuous internet connectivity.

To address these challenges, structured and modular approaches have been explored to improve reliability and response time. These approaches focus on simplifying system design while maintaining effective emotional understanding and support. They ensure that the system remains user-friendly, efficient, and easy to maintain without compromising performance. Furthermore, privacy and data security remain critical concerns in mental health applications. Many existing systems do not provide adequate mechanisms to ensure confidentiality, which discourages users from openly sharing their thoughts and emotions. A secure and trustworthy environment is essential for the success of such platforms.

The Mental Health Companion aims to overcome these limitations by integrating emotion detection, personalized support, and privacy-focused design into a single system. It provides a balanced approach that ensures accessibility, reliability, and continuous user engagement, making mental health support more practical and effective.

IV SYSTEM ARCHITECTURE

The Mental Health Companion follows a layered architecture to ensure modularity, scalability, and efficient processing of user interactions. The system is divided into multiple layers, each responsible for specific functionalities, enabling smooth data flow and reliable performance.

A. User Interaction Layer

This layer acts as the front-end of the system where users interact with the application. It provides a simple and user-friendly interface for communication through text or voice input. Users can express their thoughts, receive responses, and track their mood over time. The design focuses on accessibility, ease of use, and a comfortable user experience.

B. Recommendation Processing Layer

This layer is responsible for analyzing user input and generating appropriate responses. It uses Natural Language Processing (NLP) techniques to detect emotions and understand user intent. Based on the identified emotional state, the system provides personalized suggestions such as stress-relief techniques, motivational messages, and emotional guidance. The structured and modular approach ensures fast, reliable, and understandable outputs.

C. Backend Service Layer

The backend layer manages the core logic and handles communication between different components of the system. It processes user requests, manages sessions, and ensures smooth interaction between the user interface and the data storage layer. It also maintains system security, performance, and scalability.

D. Data Storage Layer

This layer is responsible for securely storing user data, including conversation history, mood tracking records, and generated responses. It ensures data privacy and confidentiality while enabling efficient retrieval of information. The stored data also helps in improving personalization and tracking user progress over time.

supportive responses or crisis interventions with alerts and helpline suggestions. The mood tracking feature allows users to record and monitor their emotional states over time through stored data and graphical insights, while the assessment module evaluates mental health conditions and provides appropriate coping strategies. All interactions are securely stored to ensure personalization and continuity, and the system includes session management for smooth user experience. This modular design ensures reliability, quick response, data security, and effective support, making the system a practical solution for continuous mental health assistance. And this is the proposed model and its components.

V PROPOSED MODEL

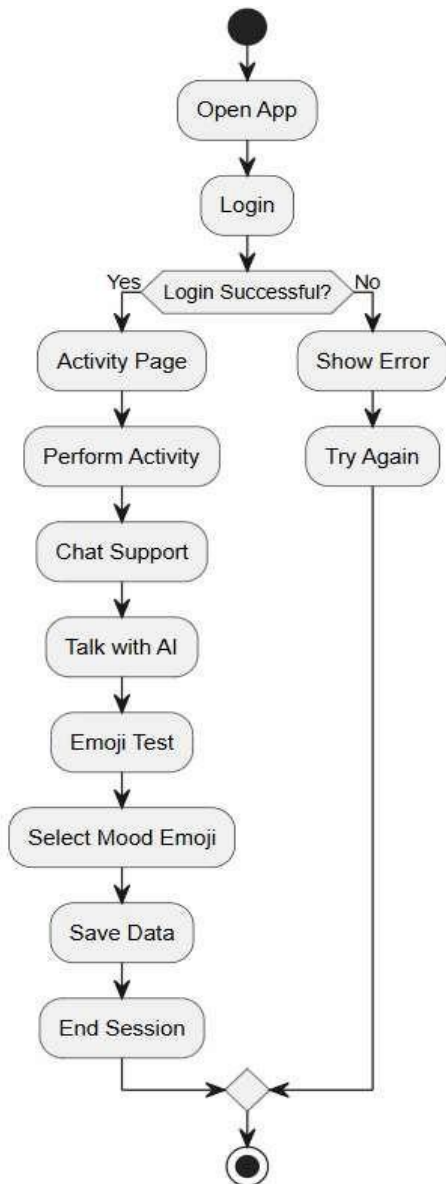


Fig.1: Proposed Model Diagram

The proposed Mental Health Companion model is designed as an intelligent and interactive system that provides real-time emotional support through a structured workflow. The process begins with user authentication, after which the user can access features such as chat support, mood tracking, and self-assessment. In the chat module, user input is analyzed using Natural Language Processing (NLP) to detect emotions and assess risk levels, enabling the system to generate either

VI TECHNOLOGY STACK

The Mental Health Companion is developed using a well-structured technology stack to ensure scalability, reliability, and efficient performance. The system integrates both front-end and back-end components along with supporting services for seamless functionality.

A. Frontend Technologies:

The front-end is built using React, which provides a responsive and interactive user interface for smooth user interaction. HTML and CSS are used for designing and styling the application, ensuring accessibility and ease of use.

B. Backend Technologies:

The backend handles core functionalities such as request processing, session management, and communication between system components. It is responsible for executing application logic and ensuring secure and efficient data flow throughout the system.

C. Authentication and Security:

User authentication mechanisms are implemented to ensure secure access to the system. This includes user login and registration processes, which help in maintaining personalized user sessions and protecting sensitive information.

D. Real-Time Database and Storage:

A real-time database is used to store user interactions, chat history, and mood tracking data, enabling instant updates and synchronization. Storage services are utilized for securely maintaining user-related information and ensuring efficient data retrieval.

E. Recommendation Engine:

The system incorporates a recommendation engine that analyzes user input using Natural Language Processing (NLP) to detect emotions and provide personalized suggestions. It generates appropriate responses, coping strategies, and mental health guidance based on the user's emotional state.

F. Deployment:

The application is deployed using modern hosting platforms to ensure high availability, scalability, and consistent performance. Cloud-based deployment enables the system to handle multiple users simultaneously while maintaining fast response times. It also supports automatic updates, monitoring, and maintenance, ensuring that the application remains reliable and up-to-date. Additionally, deployment allows users to access the system anytime and from anywhere, making the platform highly accessible, flexible, and efficient for continuous mental health support.

VI RESULT SCREENSHOTS



Fig. 2: Home Page



Fig. 3: Activity Page



Fig. 4: Session Page

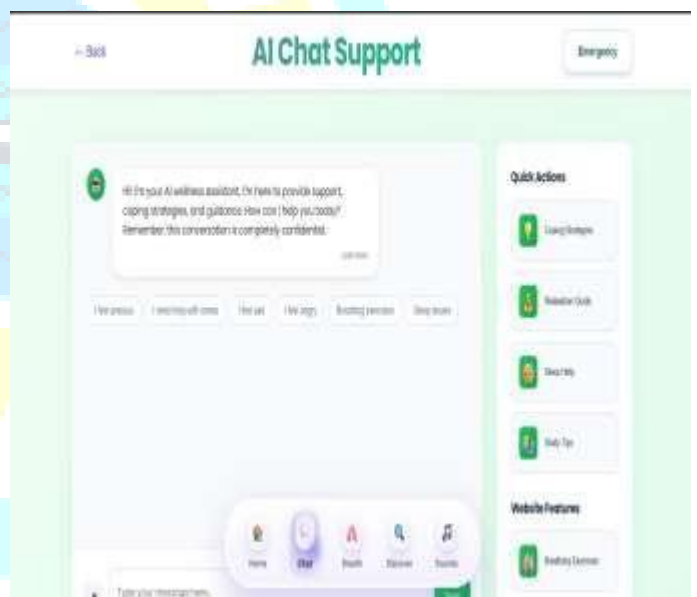


Fig. 5: Chat Page

VII CONCLUSION & FUTURE WORK

The Mental Health Companion represents a significant step toward addressing the growing challenges of mental health in today's fast-paced and digitally evolving world. With increasing levels of stress, anxiety, and emotional imbalance, there is a strong need for systems that can provide continuous and accessible support to individuals. The proposed system effectively utilizes Artificial Intelligence (AI) and Natural Language Processing (NLP) to analyze user input and understand emotional states. This capability allows the system

to deliver personalized and context-aware responses that assist users in managing their mental well-being.

One of the major advantages of the system is its ability to provide real-time interaction. Users can communicate their thoughts and feelings instantly and receive immediate guidance, reducing the delay often experienced in traditional mental health support systems. The structured and modular design of the Mental Health Companion ensures that the system remains reliable, scalable, and easy to maintain. This design approach also improves the overall performance and responsiveness of the system. The user-friendly interface plays a crucial role in encouraging user engagement. By providing a simple and comfortable platform, users are more likely to express their emotions openly without hesitation or fear of judgment. The inclusion of mood tracking features enables users to monitor their emotional patterns over time. This helps in identifying triggers and understanding behavioral trends, which is essential for improving mental health awareness.

Additionally, the self-assessment module allows users to evaluate their mental condition through structured analysis. Based on the results, the system provides appropriate suggestions and coping strategies to support emotional stability. Privacy and data security are key components of the system. The Mental Health Companion ensures that all user data is handled securely, creating a safe and confidential environment for open communication. The system also contributes to making mental health support more accessible and cost-effective. It reduces dependency on immediate professional intervention and provides basic support to a wider population. However, the system has certain limitations that need to be addressed. The current model may not fully capture complex human emotions and may sometimes provide generalized responses. Another limitation is the dependency on predefined logic and structured responses, which may restrict the system's adaptability in highly dynamic or sensitive situations.

In future work, the integration of advanced machine learning and deep learning techniques can significantly improve the accuracy of emotion detection and response generation. This will make the system more intelligent and context-aware.

The system can also be enhanced by incorporating voice-based interaction and multilingual support. These features will improve accessibility and allow users from diverse backgrounds to benefit from the platform.

Furthermore, integration with wearable devices and real-time health monitoring systems can provide additional insights into user well-being. This will enable the system to offer more comprehensive and proactive support. Finally, collaboration with mental health professionals and integration with telemedicine platforms can elevate the system to a more

advanced level. This will ensure that users receive both automated and professional support, making the Mental Health Companion a powerful and impactful solution for improving mental health care in the future.

REFERENCES

- [1] B. Inkster, S. Sarda, and V. Subramanian, "Empathy-driven AI agent (Wysa) for digital mental well-being," *JMIR mHealth uHealth*, vol. 6, no. 11, p. e12106, 2018.
- [2] R. Fulmer *et al.*, "Psychological AI to support mental health," *Frontiers in Psychology*, vol. 9, p. 797, 2018.
- [3] A. Abd-alrazaq *et al.*, "Chatbots in mental health: A review," *Int. J. Med. Informatics*, vol. 150, pp. 104–129, 2021.
- [4] A. N. Vaidyam *et al.*, "Chatbots in mental health: Review," *Can. J. Psychiatry*, vol. 64, no. 7, pp. 456–464, 2019.
- [5] World Health Organization, *Digital Tools for Mental Health*. WHO, 2022.
- [6] A. Ho, J. Hancock, and A. S. Miner, "Psychological effects of AI in mental health," *J. Med. Internet Res.*, vol. 20, no. 11, p. e11293, 2018.
- [7] OpenAI, "AI models for mental health conversations," *Research Notes*, 2023.
- [8] C. A. Figueroa *et al.*, "AI conversational agents in mental health," *Nature Digital Medicine*, vol. 4, no. 1, pp. 1–12, 2021.
- [9] HealthIT.gov, *Privacy & Security in Digital Mental Health*, U.S. Dept. Health & Human Services, 2022.
- [10] P. Kumar and D. Ghosh, "AI-based mental health chatbots: Review," *Int. J. AI Research*, vol. 15, no. 2, pp. 55–70, 2021.