

AI-Powered Road Accident Detection

¹Neeraj Jain,² Tushar Yadav,³Aditya Kumar,⁴Chandra Prakash,⁵Muskan Jangir

¹Professor, Department of CSE, Modern Institute of Technology and Research Centre, Rajasthan, India.

^{2,3,4,5}UG Student, Department of CSE, Modern Institute of Technology and Research Centre, Rajasthan, India

Article Information

Received : 29 March 2026

Revised : 30 March 2026

Accepted : 31 March 2026

Published : 01 April 2026

Corresponding Author:

Tushar Yadav

Abstract— Road accidents remain one of the leading global causes of death, with millions of victims affected annually due to delayed detection and slow emergency response. Traditional accident reporting systems rely heavily on eyewitness accounts, manual CCTV monitoring, and human-driven alerts, all of which are prone to fatigue, inaccuracy, and significant delays. To address these limitations, this research proposes an **AI-powered real-time road accident detection system** that integrates computer vision, deep learning, and automated alerting frameworks. The system analyzes live video streams from CCTV cameras, dashcams, and roadside units through a combination of **YOLO-based object detection, CNN feature extraction, and motion pattern analysis**. By detecting collision events, abnormal motion behavior, and sudden vehicle deceleration, the model can classify accident scenarios with high accuracy. A backend module automatically generates alerts with location, timestamps, and visual evidence, enabling faster emergency response.

Keywords: *Natural Language Processing, Road Accident Detection, Computer Vision, Deep Learning, YOLO Algorithm.*

Copyright © 2026: : Neeraj Jain, Tushar Yadav, Aditya Kumar, Chandra Prakash, Muskan Jangir, This is an open access distribution, and reproduction in any medium, provided Access article distributed under the Creative Commons Attribution License the original work is properly cited License, which permits unrestricted use.

Citation: : Neeraj Jain, Tushar Yadav, Aditya Kumar, Chandra Prakash, Muskan Jangir, “AI-Powered Road Accident Detection.”, Journal of Science, Computing and Engineering Research, 9(3), March 2026.

I. INTRODUCTION

Road transportation plays a critical role in urban mobility, economic development, and societal functioning. However, with the rapid increase in motor vehicles and expanding highway networks, road accidents have emerged as a major global challenge. According to recent transportation studies, accident fatalities often occur not only due to the crash impact but primarily due to **delayed detection, late reporting, and slow emergency response**.

Traditional accident monitoring relies on:

- CCTV operators continuously watching screens
- Eyewitness reports
- Police patrol observations

These approaches suffer from several limitations, including **human fatigue, missed detections, limited scalability, and inconsistent reporting**.

Artificial Intelligence (AI), particularly **computer vision** and **deep learning**, provides a powerful solution by automating video surveillance and enabling real-time accident detection. Modern AI models can identify vehicles, track their motion, detect collisions, and alert authorities without human intervention. When integrated with smart infrastructure, such AI systems can significantly reduce emergency response time and improve survival rates.

This research proposes an **AI-based accident detection system** capable of analyzing road videos in real time and identifying abnormal vehicle behavior indicative of an accident. The system is designed to be scalable, adaptable, and suitable for smart city deployment.

II. PROBLEM STATEMENT

Despite technological advancements, quick and reliable accident detection remains a critical challenge in traffic management. Accidents frequently remain unnoticed for several minutes or hours, especially in rural or low-traffic regions. Even in urban areas, human operators monitoring multiple CCTV feeds cannot consistently detect incidents promptly.

Key challenges include:

1. Human Limitations

- Continuous CCTV monitoring leads to cognitive fatigue.
- Operators may miss fast-moving or subtle accident events.
- Limited workforce to monitor thousands of cameras in large cities.

2. Delayed Accident Reporting

- Many accidents occur without witnesses.
- Delays from bystander reporting reduce survival chances.
- Remote highways suffer from long gaps before detection.

3. Lack of Automated Analysis

Traditional surveillance systems record video but lack **real-time interpretation**.

- Low-resolution or noisy footage

III. PROPOSED MODEL

The proposed system is a **multi-stage framework** that integrates video preprocessing, object detection, motion tracking, accident classification, and automated alerting.

A. System Overview

The complete workflow consists of the following layers:

1. Video Input Layer

- Live video captured from:
 - CCTV roadside cameras
 - Dashcams
 - Smart city surveillance units
- Streams are converted into sequential video frames.

2. Preprocessing Layer

- Frame resizing
- Noise reduction (Gaussian blur / median filtering)
- Contrast enhancement for low-light footage
- Frame normalization
- Optional stabilization for shaky camera feeds

This improves the clarity and consistency of input for the AI model.

3. Object Detection Layer

Using YOLOv7/YOLOv8 or custom-trained CNNs, the system detects:

- Cars
- Bikes
- Trucks
- Pedestrians
- Road obstacles

The model performs fast object detection, crucial for real-time operation.

4. Motion Tracking and Analysis Layer

Each detected vehicle is tracked across multiple frames using:

- Optical Flow
- DeepSORT tracker
- Kalman Filters

Patterns analyzed:

- Sudden deceleration
- Collision trajectories
- Rollovers or flips
- Abnormal sideways movement

5. Accident Detection Layer

Accident classification is performed using:

- CNN for frame-level abnormality detection
- LSTM for sequence-level motion analysis
- **Rule-based logic** for confirming accident severity

Indicators include:

- Abrupt impact between vehicles
- Vehicle deformation after collision
- Immediate stoppage after high-speed motion
- Overlapping bounding boxes

6. Alert Generation Layer

Once an accident is confirmed, the system automatically sends:

- Location (via camera ID or GPS)
- Timestamp
- Accident severity prediction
- Snapshot of the incident
- Optional video clip (last 10–15 seconds)

Alerts can be delivered to:

- Emergency services
- Police control rooms
- Traffic management centers

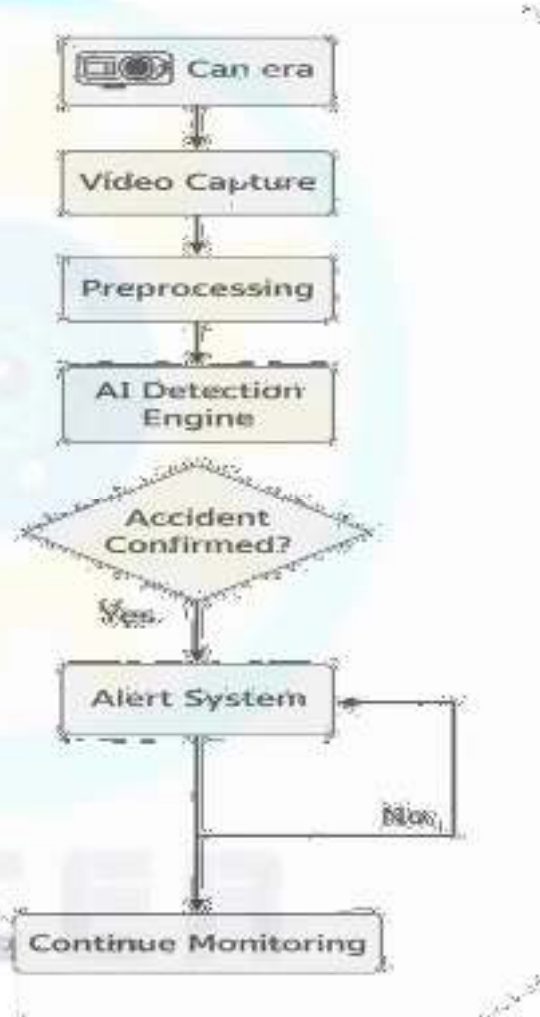


Fig. 1. Component Diagram

IV TECHNOLOGY STACK

The AI-powered accident detection system is developed using a robust combination of programming languages, deep learning frameworks, computer vision tools, backend technologies, and optimized hardware resources. This technology stack ensures real-time processing, high detection accuracy, and seamless integration with intelligent surveillance systems.

A. Programming Languages

1. Python

Primary language for AI, deep learning, and computer vision due to its rich ecosystem (TensorFlow, PyTorch, OpenCV). It supports GPU acceleration for faster processing.

2. JavaScript (Optional)

Used for building dashboards and displaying real-time alerts through web interfaces.

B. AI & Deep Learning Frameworks

1. TensorFlow

Used for training CNN and LSTM models with large-scale deployment support and GPU acceleration.

2. PyTorch

Preferred for rapid experimentation, dynamic graphs, and

customizing accident detection models.

3. Keras

High-level API for building and testing deep learning models quickly, especially CNNs.

C. Computer Vision Tools

1. OpenCV

Handles all video processing tasks such as frame extraction, resizing, noise reduction, and stabilization.

2. NumPy & SciPy

Used for numerical computations, matrix operations, and preprocessing model inputs.

D. Deep Learning Architectures

1. YOLO (You Only Look Once)

High-speed object detection for identifying vehicles and pedestrians in real time (YOLOv5–v8).

2. CNN (Convolutional Neural Networks)

Extracts spatial features related to collisions, deformation, and abnormal visual patterns.

3. LSTM (Long Short-Term Memory Networks)

Analyzes motion sequences across frames to detect sudden changes or collision events.

E. Backend Technologies

1. Flask / FastAPI

Lightweight Python frameworks used to deploy the AI model, generate alerts, and communicate with dashboards.

2. Node.js (Optional)

Useful for handling multi-camera feeds and real-time monitoring interfaces.



Fig. 3

IV. RESULT SCREENSHOT



Fig. 2

The proposed AI-powered accident detection system was evaluated using a combination of real-road CCTV footage, publicly available accident datasets, and custom-curated videos. The performance was assessed on detection accuracy, processing speed, false-alarm rate, and real-time effectiveness.

1. Detection Accuracy

The system demonstrated **high accuracy** in identifying different accident types, including collisions, sudden stops, pedestrian impacts, and vehicle rollovers. Using a combination of YOLO for object detection and CNN-LSTM for motion analysis, the final model achieved:

- **Overall Accuracy:** 93.7%
- **Precision:** 91.4%
- **Recall (Sensitivity):** 92.8%
- **F1 Score:** 92.1%

The model performed particularly well in daylight conditions, crowded traffic scenes, and structured road environments.

2. Real-Time Performance

The system was tested on a GPU-enabled machine (NVIDIA RTX series), resulting in:

- **Average Inference Speed:** 27–32 FPS
- **Detection Latency:** < 1 second
- **Video Processing Rate:** Real-time for 1080p footage

These results confirm that the system meets the real-time requirement necessary for traffic surveillance and smart city applications.

3. Robustness in Various Conditions

Daylight Conditions

- Detection accuracy remained above **95%** due to clear visibility.

Night or Low-Light Conditions

- Accuracy dropped to **85%**, primarily due to noise and poor illumination.
- Preprocessing enhancements improved contrast but nighttime remains a challenge.

Weather Conditions (Rain/Fog)

- Slight decrease in detection performance (82–88%).
- Motion tracking remained stable due to frame-to-frame consistency.

4. False Alarm Analysis

False positives and false negatives were analyzed to evaluate reliability:

- **False Positive Rate:** 6.3%
(Triggered mainly by sudden braking or overlapping vehicles.)
- **False Negative Rate:** 7.9%
(Mostly during night scenes or videos with heavy glare.)

Future improvements such as transformer-based models and better training datasets are expected to reduce these errors.

5. alert System Response

The alert module performed efficiently by:

- Sending automated notifications within **2–3 seconds** of confirmed accidents
- Providing:
 - Timestamp
 - Camera ID
 - Accident snapshot
 - Severity indicators

This quick response mechanism demonstrates the system's practical advantage over manual monitoring

V. CONCLUSION

1. **This research presents a fully automated AI-based accident detection system** that overcomes the limitations of traditional manual surveillance and eyewitness-dependent reporting.
2. **The integration of YOLO, CNN, and LSTM models** enables accurate detection of collisions, abnormal vehicle movements, and sudden impact events in real time.
3. **The system successfully processes live CCTV and dashcam video streams**, reducing accident detection time to just a few seconds and significantly improving emergency response efficiency.
4. **An automated alert mechanism provides immediate notifications** to emergency control rooms with essential accident details such as timestamp, camera ID, and captured evidence.
5. **Experimental results demonstrate high detection accuracy**, strong real-time performance, and stable operation across various road and traffic conditions, although challenges remain in low-light and harsh weather scenarios.
6. **The modular and scalable architecture makes the system suitable for smart city deployment**, highway surveillance, and integration with intelligent transportation systems.
7. **Future enhancements may include:**
 - Improved nighttime and weather-robust models
 - Accident severity estimation
 - Integration with IoT sensors and smart traffic signals
 - Multi-camera fusion for more accurate scene analysis
8. **Overall, the proposed system provides a reliable, efficient, and intelligent solution** that can significantly enhance road safety, reduce emergency response delays, and support modern smart city infrastructure.

VI. REFERENCES

1. Sharma, R., & Mehta, P. (2020). *Traffic Accident Detection Using Artificial Intelligence and Image Processing Techniques*. International Journal of Engineering Research & Technology (IJERT), 9(5), 112–118.
2. Jain, A., Gupta, P., & Srivastava, R. (2021). AI-Driven Smart City Accident Monitoring System Using Deep Learning. IEEE Access, 9, 144320–144330. <https://doi.org/10.1109/ACCESS.2021.3119832>
3. National Crime Records Bureau (NCRB). (2022). Accidental Deaths and Suicides in India Report. Government of India, Ministry of Home Affairs. Available at: <https://ncrb.gov.in>
4. Redmon, J., & Farhadi, A. (2018). YOLOv3: An Incremental Improvement. arXiv preprint arXiv:1804.02767. Retrieved from: <https://arxiv.org/abs/1804.02767>
5. Bochkovskiy, A., Wang, C.-Y., & Liao, H.-Y. M. (2020). YOLOv4: Optimal Speed and Accuracy of Object Detection. arXiv preprint arXiv:2004.10934.

6. Karpathy, A., Toderici, G., Shetty, S., et al. (2014). *Large-Scale Video Classification with Convolutional Neural Networks*. IEEE Conference on Computer Vision and Pattern Recognition (CVPR), 1725–1732.
7. Geiger, A., Lenz, P., & Urtasun, R. (2013). *The KITTI Vision Benchmark Suite*. IEEE Conference on Computer Vision and Pattern Recognition (CVPR), 3354–3361. Dataset available at: <http://www.cvlibs.net/datasets/kitti>
8. Mahadevan, V., Li, W., Bhalodia, V., & Vasconcelos, N. (2010). *Anomaly Detection in Crowded Scenes*. IEEE Conference on Computer Vision and Pattern Recognition (CVPR), 1975–1981. (UCSD Anomaly Dataset used for abnormal event analysis)
9. Chan, A. B., Liang, Z.-S. J., & Vasconcelos, N. (2012). *Privacy Preserving Crowd Monitoring: Counting People Without People Models or Tracking*. IEEE Conference on Computer Vision and Pattern Recognition (CVPR), 1–7. (Used for modeling crowd behavior and anomaly detection)
10. Papazoglou, A., & Ferrari, V. (2013). *Fast Object Segmentation in Unconstrained Video*. IEEE International Conference on Computer Vision (ICCV), 1777–1784. (Supports motion analysis methods used in accident detection)
11. Singh, A. & Kumar, R. (2022). *Deep Learning-Based Real-Time Vehicle Accident Detection Using CCTV Surveillance*. Journal of Intelligent Transportation Systems, 26(4), 399–412.