

# E-LEARNING PLATFORM WITH AI QUIZ GENERATOR

<sup>1</sup>Mr. Mohit Sharma, <sup>2</sup>Umesh Kumar, <sup>3</sup>Naveen, <sup>4</sup>Rudraksh, <sup>5</sup>Punit Sangwan

<sup>1</sup>Asst. Professor, Department of CSE, Modern Institute of Technology and Research Centre, Rajasthan, India.

<sup>2,3,4,5</sup>UG Student, Department of CSE, Modern Institute of Technology and Research Centre, Rajasthan, India

## Article Information

Received : 29 March 2026  
Revised : 30 March 2026  
Accepted : 31 March 2026  
Published : 01 April 2026

Corresponding Author:

Umesh Kumar

**Abstract**— The rapid growth of digital technology has transformed the traditional education system into a more flexible and accessible learning environment. This project presents an advanced E-Learning Platform integrated with an AI-based Quiz Generator designed to enhance the learning experience for students and educators. The platform provides users with access to study materials, video lectures, and interactive content anytime and anywhere.

A key feature of this system is the implementation of Artificial Intelligence to automatically generate quizzes based on the learning content. The AI analyzes the provided study material and creates relevant questions, including multiple-choice, true/false, and short-answer formats. This reduces the manual effort required by educators and ensures continuous assessment of students.

**Keywords:** Learning System, Artificial Intelligence Based, Pose Estimation, Real-Time Feedback, Availability.

**Copyright © 2026: Mr. Mohit Sharma, Umesh Kumar, Naveen, Rudraksh, Punit Sangwan** .This is an open access distribution, and reproduction in any medium, provided Access article distributed under the Creative Commons Attribution License the original work is properly cited License, which permits unrestricted use.

**Citation: Mr. Mohit Sharma, Umesh Kumar, Naveen, Rudraksh, Punit Sangwan** “E-Learning Platform with AI Quiz Generator ”, Journal of Science, Computing and Engineering Research, 9(4),April 2026.

## I. INTRODUCTION

In recent years, the education sector has undergone a significant transformation due to the rapid advancement of digital technologies. Traditional classroom-based learning is increasingly being supplemented and, in some cases, replaced by E-learning platforms that provide flexibility, accessibility, and personalized learning experiences. E-learning allows students to access educational content anytime and anywhere, breaking geographical and time constraints. However, one of the major challenges in online education is the effective assessment of student performance. Conventional methods of creating quizzes and tests require considerable time and effort from educators. To address this issue, the integration of **Artificial Intelligence (AI)** into e-learning systems has emerged as a powerful solution. This project introduces an innovative **E-Learning Platform integrated with an AI Quiz Generator**. The platform is designed to provide a comprehensive learning environment

where users can access **study materials, watch video lectures, and participate in interactive learning activities**. The AI-based quiz generator automatically creates relevant and diverse questions from the provided content, enabling continuous and efficient assessment without manual intervention. Additionally, the system includes features such as user authentication, progress tracking, performance analytics, and administrative controls. These features help both learners and educators monitor progress and improve the overall learning process. The primary objective of this platform is to enhance the quality of education by making learning more engaging, adaptive, and efficient. By combining e-learning technologies with **AI-driven automation**, the system aims to bridge the gap between teaching and evaluation, ultimately contributing to a smarter and more effective educational ecosystem.

## II. PROBLEM STATEMENTS

### A. Limitations of Traditional Learning Systems:

Traditional classroom-based education is restricted by time, location, and physical presence. Students cannot always attend classes due to distance, health issues, or other

constraints. This limits access to quality education and reduces learning opportunities.

#### **B. Lack of Accessible Learning Resources:**

Many students do not have continuous access to updated study materials, recorded lectures, and interactive content. Existing systems often fail to provide centralized and easily accessible digital learning resources.

#### **C. Inefficient and Time-Consuming Assessment Methods:**

Teachers spend significant time creating quizzes, tests, and assignments manually. This process is repetitive, time-consuming, and may lead to delays in evaluating student performance.

#### **D. Absence of Personalized Learning**

Most traditional and basic e-learning platforms do not adapt to individual learning styles or pace. Every student receives the same content and assessment, which may not suit their understanding level.

#### **E. Low Student Engagement**

Conventional teaching methods often lack interactivity, making learning less engaging and less effective. Students may lose interest due to passive learning environments.

### **III. LITERATURE REVIEW**

The concept of E-learning has evolved significantly over the past decade, with platforms like online course systems and virtual classrooms becoming widely popular. Many existing systems provide digital content, video lectures, and basic quizzes. However, most of these platforms rely on manually created assessments, which can be time-consuming and less adaptive to individual learning needs.

Recent advancements in Artificial Intelligence have introduced smarter approaches to education. AI-based systems can analyze **user behavior, learning patterns, and content** to provide personalized recommendations. Some research studies have explored automated question generation using **Natural Language Processing (NLP)**, which enables systems to generate questions from textual content.

Despite these advancements, many existing solutions lack full integration of AI-powered quiz generation with user-friendly e-learning platforms. This project aims to bridge that gap by combining content delivery with intelligent, automated assessment, making learning more efficient and adaptive.

#### **A. Overview of Automatic Question Generation (AQG):**

Automatic Question Generation (AQG) is a key research area in Artificial Intelligence and Natural Language Processing (NLP).

It focuses on generating meaningful questions automatically from input data such as text, images, or videos. AQG systems are widely used in educational platforms, chatbots, and intelligent tutoring systems.

Research shows that AQG systems aim to generate questions that are syntactically correct, semantically meaningful, and contextually relevant.

#### **B. Evolution of AI-Based Quiz Generation:**

Early systems for quiz generation were rule-based, where predefined templates and grammatical rules were used to convert sentences into questions. These systems were simple but lacked flexibility and intelligence.

Later, machine learning techniques improved the system by learning patterns from data. Recently, advanced models such as deep learning and transformer-based models (like LLMs) have significantly enhanced the quality of generated questions.

### **IV. PROPOSED MODEL**

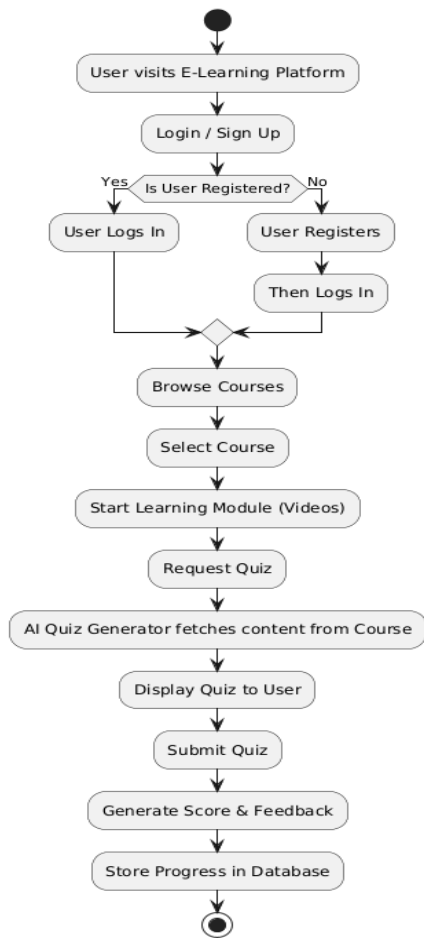
The proposed model is an AI-driven adaptive e-learning system that integrates:

- Personalized learning
- Automated quiz generation
- Performance tracking
- Feedback-based improvement
- The system uses concepts from:
  - Machine Learning
  - Natural Language Processing
  - Adaptive Learning to enhance the learning experience.

#### **Step-by-Step Flow:**

- User logs into the system
- Selects course/topic
- Studies learning material
- AI generates quiz dynamically
- User attempts quiz
- System evaluates performance
- Adaptive engine updates difficulty level

**E-Learning Platform with AI Quiz Generator - Flowchart**



**V. TECH STACK**

**A. Frontend Technology:**

Frontend technology refers to the client-side development layer of a web-based system that directly interacts with users. In an E-Learning platform with an AI quiz generator, the frontend is responsible for delivering an interactive, responsive, and user-centric interface that facilitates seamless learning and assessment. The frontend layer is designed using core web technologies along with modern frameworks to enhance usability and performance.

**B. Backend Technology:**

Backend technology refers to the server-side architecture that manages data processing, storage, business logic, and communication between the frontend interface and the database. In an E-Learning platform with an AI quiz generator, the backend acts as the core engine that powers user authentication,

content delivery, AI-based quiz generation, and performance analysis.

**C. Database Technology:**

Given that resumes are semi-structured—varying wildly in length, section count, and content—a NoSQL database like MongoDB is superior to relational models. It allows for a flexible schema that can store diverse skill sets and evolving ML corpora without requiring frequent migrations.

**D. Document Parsing:**

Reliability in extraction is paramount. Py Mu PDF was selected for its high-speed C-based core, capable of rendering PDF pages into text blocks accurately, while python-docx provides an object-oriented approach to traversing the XML tree of Word documents.

**VI. RESULT SCREENSHOTS**

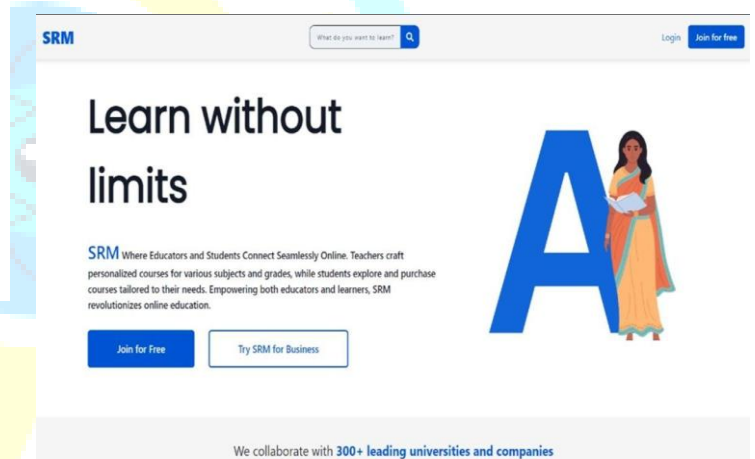


Fig. 1. Home Page

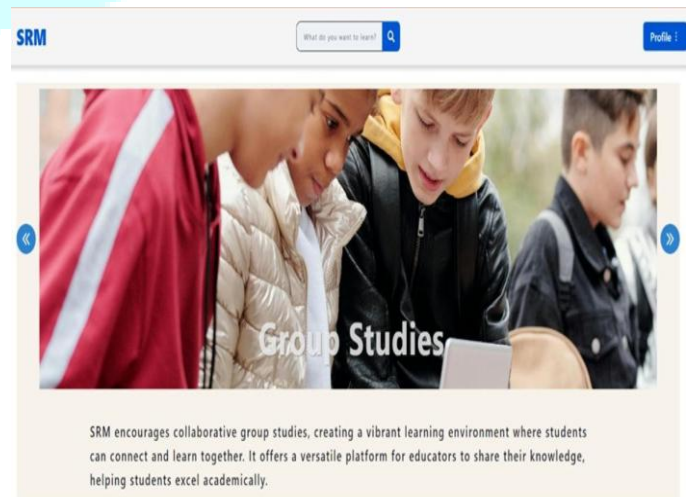


Fig. 2. Output Page

## VII. CONCLUSION

The development of the E-Learning Platform with an AI-based quiz generator represents a significant advancement in modern digital education systems. By integrating intelligent technologies such as Machine Learning and Natural Language Processing, the platform successfully enhances traditional learning methods through automation, personalization, and assessment.

The proposed system provides a user-friendly and interactive environment where learners can access study materials, attempt dynamically generated quizzes, and receive immediate feedback on their performance. The AI quiz generator plays a crucial role by automatically creating relevant and diverse questions from the learning content, thereby reducing manual effort and ensuring continuous evaluation. Furthermore, the platform supports adaptive learning by analyzing user performance and adjusting the difficulty level accordingly. This ensures that learners receive customized content based on their knowledge level, improving both engagement and learning outcome. From a technical perspective, the integration of modern frontend and backend technologies ensures that the system is scalable, efficient, and responsive. The use of intelligent algorithms not only optimizes content delivery but also enables data-driven insights into student performance.

## REFERENCES

### Textbooks and Academic Literature

- [1] Bird, S., Klein, E., & Loper, E. (2009). Natural Language Processing with Python: Analyzing Text with the Natural Language Toolkit. O'Reilly Media. (Foundational reference for NLTK and tokenization methods).
- [2] Manning, C. D., Raghavan, P., & Schütze, H. (2008). Introduction to Information Retrieval. Cambridge University Press. (The standard text for Cosine Similarity, Vector Space Models, and TF-IDF logic).
- [3] Jurafsky, D., & Martin, J. H. (2023). Speech and Language Processing: An Introduction to Natural Language Processing, Computational Linguistics, and Speech Recognition. Pearson. (Essential for modern NER and Transformer-based NLP theory).
- [4] Flask. (2026). Flask Documentation (Version 3.0.x). Retrieved from <https://flask.palletsprojects.com/en/3.0.x/>
- [5] MongoDB, Inc. (2026). MongoDB Manual: The NoSQL Document Database. Retrieved from <https://www.mongodb.com/docs/manual/>